



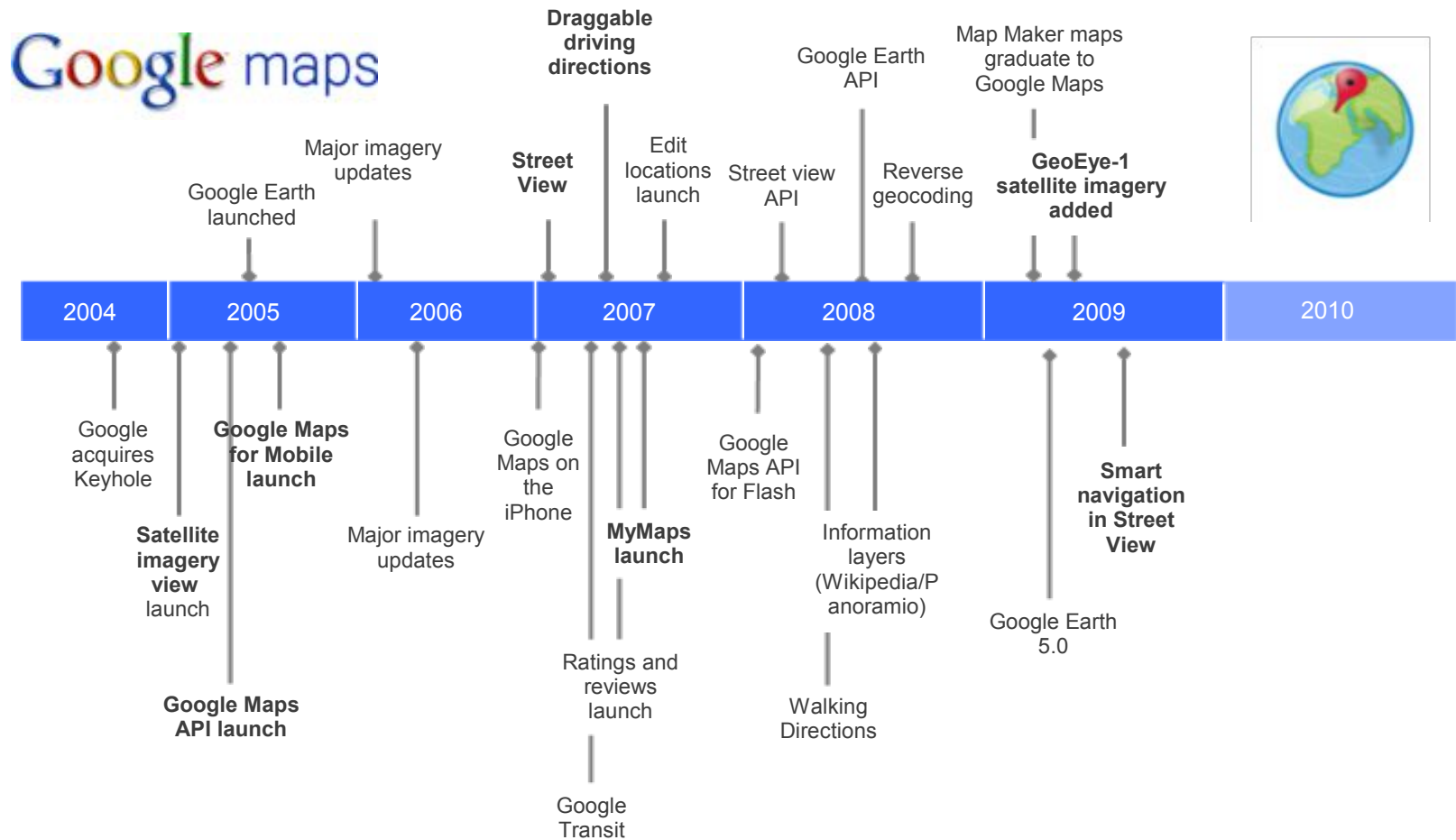
Google Maps - Where we've been and the road ahead

Marcelo Quintella
December 04, 2009

To organize the world's information
and make it universally accessible and useful.

To **geographically organize** the world's information
and make it universally accessible and useful.

A little bit of history



Largest Fused Earth Database Ever Created

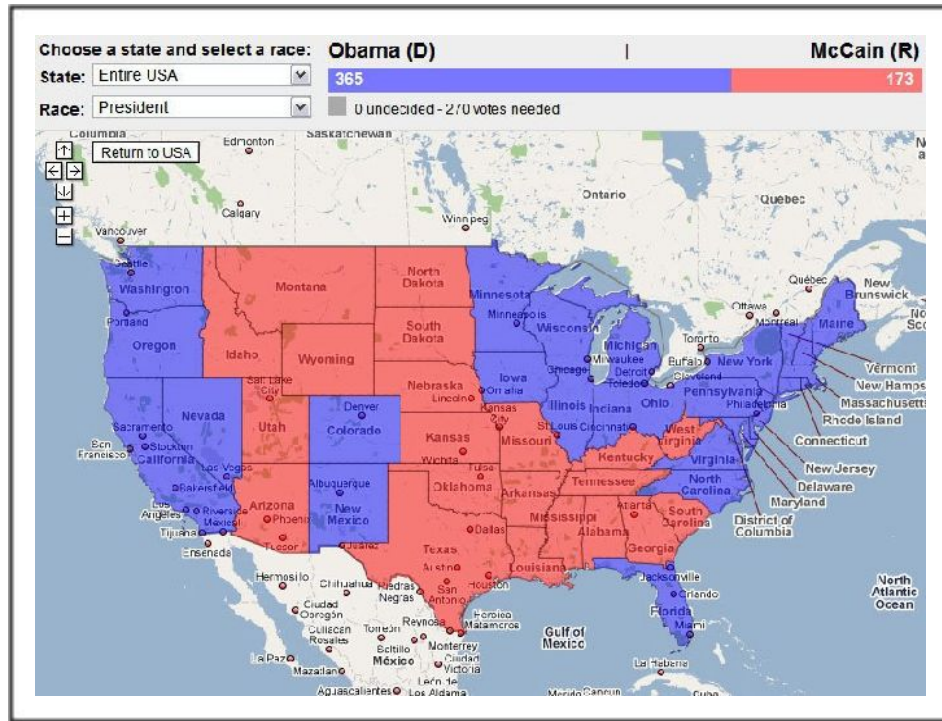


- **Every day**, Maps and Earth users spend **over 1 million hours browsing geo content**
 - Most popular mapping site in the world
 - Most popular mapping site in Europe
 - Most popular mapping site in the U.S
 - Most popular mapping site in Brazil
 - **Provides detailed street maps in over 100 countries**
 - **Over 20 million maps have been created by users**
 - **Over 150,000 active sites using the Maps API**
 - **Over 10 million Panoramio photos (photos of places) are viewable in Maps and Earth**
 - Transit routing is available in more than 250 cities worldwide covering tens of thousands of transit stations
 - 500 million unique Earth user activations
 - Detailed Street View imagery is available in 10 countries around the world
 - Earth is available in 41 different languages
 - The satellite imagery in Google Earth covers over 30% of the world's land surface and 50% of the world's population in sub-meter high resolution.
 - 100 Million stars and 200 Million galaxies are visible in Sky, some of them have never been seen by a human eye before

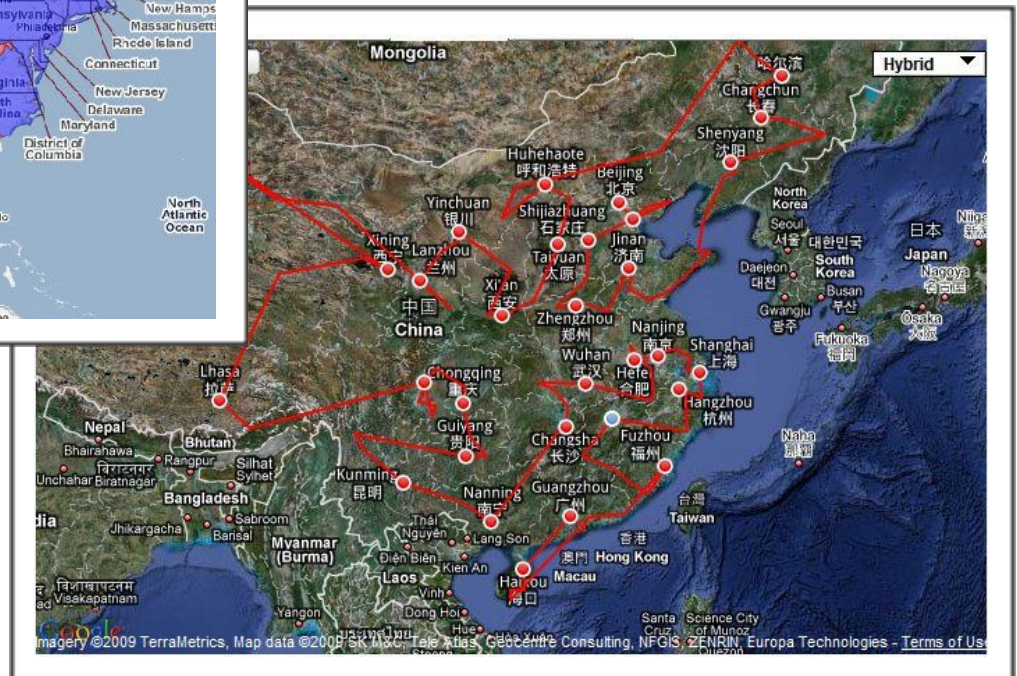
Maps have taken off in the consumer space



2008 U.S. Presidential Election



2008 Olympic Torch Relay Path



Maps have taken off in the consumer space



Restaurant & business listings

The screenshot shows the Yelp website interface. At the top, there's a search bar with "New York, NY" entered. Below the search bar, there's a list of Moroccan restaurants in New York City. The list includes:

- 1. Sullaria (Moroccan, Afghan, Moroccan, Afghan, Moroccan) - 30 reviews
- 2. Cafe Mogador (Moroccan) - 209 reviews
- 3. Cafe Gilane (French, Moroccan) - 116 reviews
- 4. Casablanca Tea Room (Coffee & Tea, Tapas Bars, Moroccan) - 14 reviews
- 5. FR. OG France Originale (Moroccan, French, Vietnamese) - 42 reviews
- 6. Casaville (Moroccan, Spanish, Tapas Bars, Moroccan) - 21 reviews
- 7. 7070 (Moroccan) - 26 reviews

To the right of the list is a map showing the locations of these restaurants in New York City.

Crime data provided by local agencies

The screenshot shows the CrimeReports website interface. At the top, there's a search bar with "San Jose" entered. Below the search bar, there's a map of San Jose showing crime data. The map is color-coded by crime type, with red indicating "OTHER SEXUAL OFFENSE" and blue indicating "ASSAULT W/ DEADLY WEAPON".

Other Sexual Offense details:

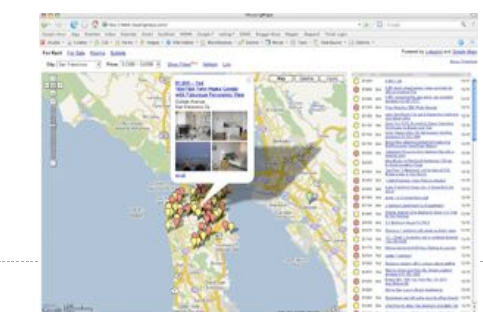
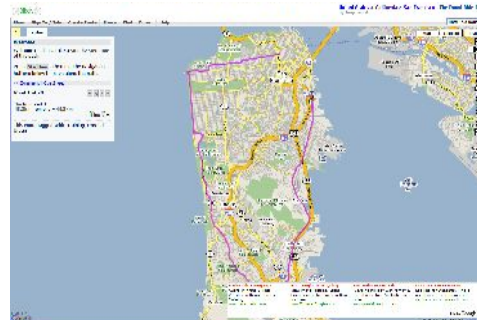
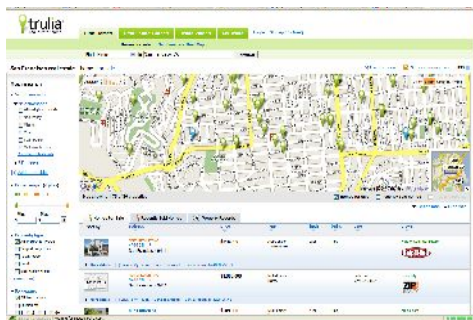
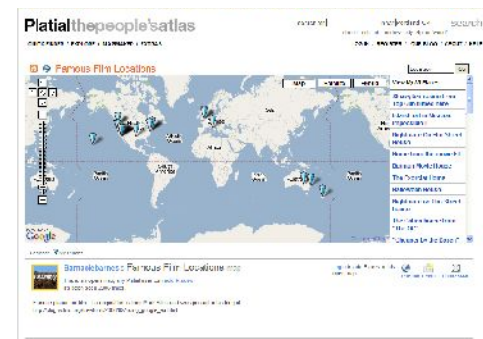
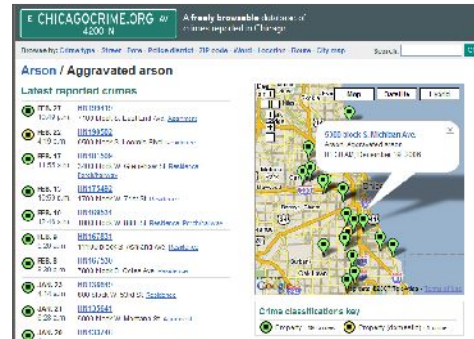
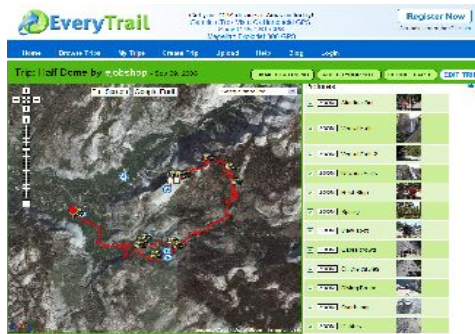
- 12 Aug 2009
- 2100 BLOCK MCKEE RD
- Distance: 3.21 miles
- Identifier: P092240641
- Time: 19:34:52
- Final disposition: N
- Call Type: INCIDENT EXPOSURE

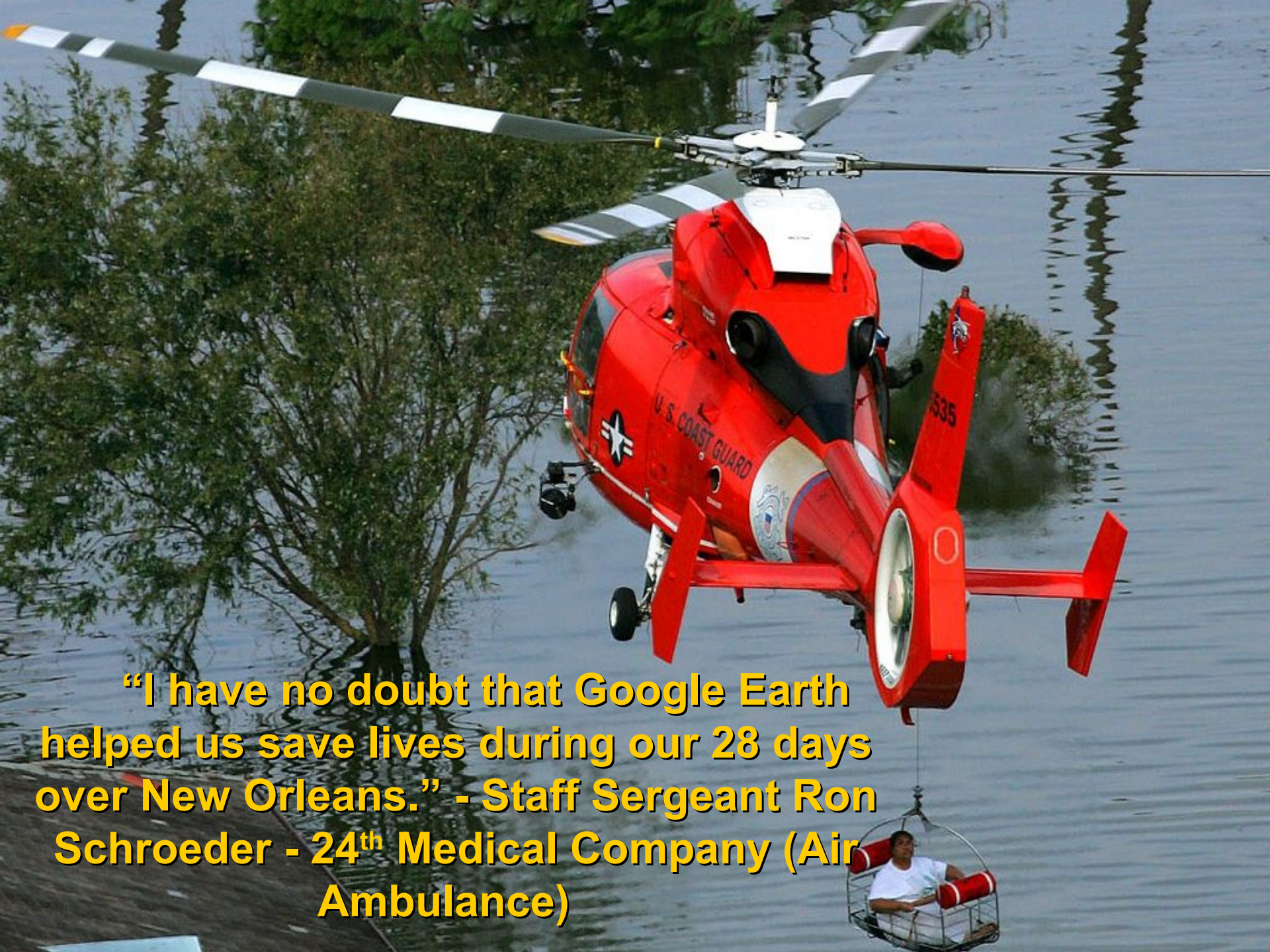
Assault w/ Deadly Weapon details:

- 12 Aug 2009
- 700 BLOCK S BASCOM AV
- Distance: 3.04 miles
- Identifier: 9092240438
- Time: 17:29:15
- Call Type: 215
- Description: ASSAULT W/ DEADLY WEAPON
- Final disposition: R
- Data provided by: Santa Clara County Sheriff's Office

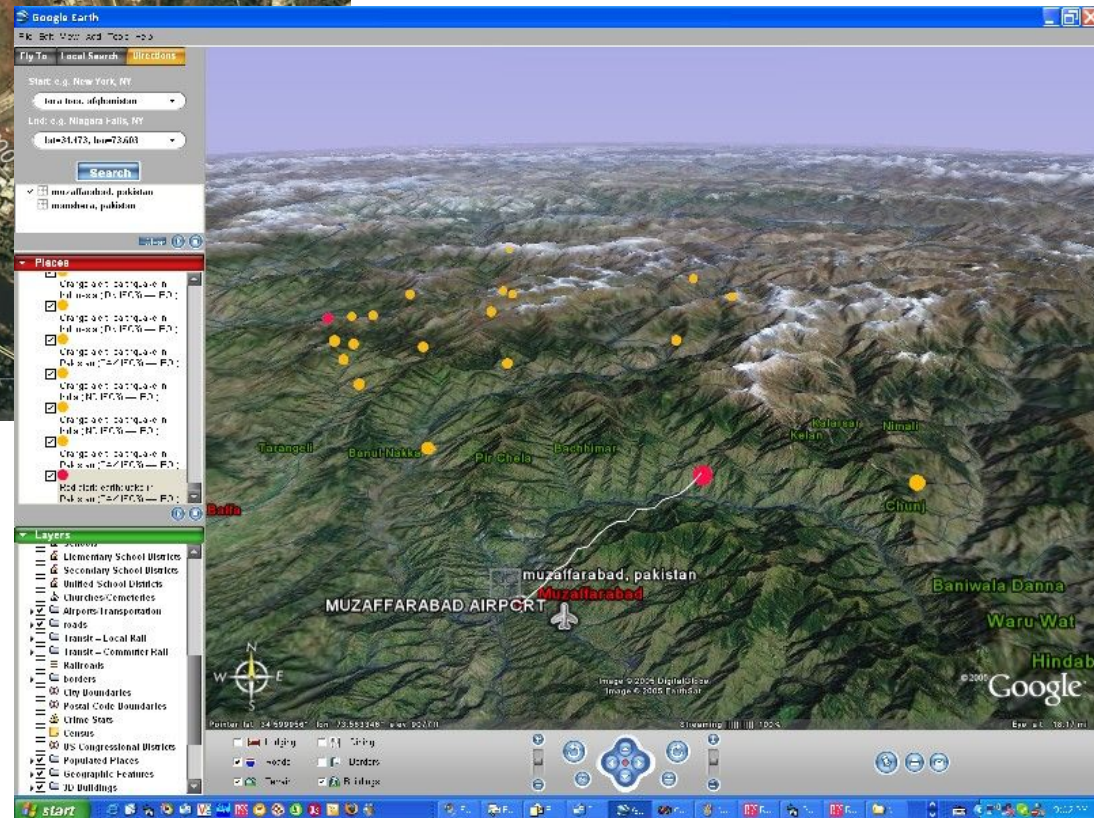
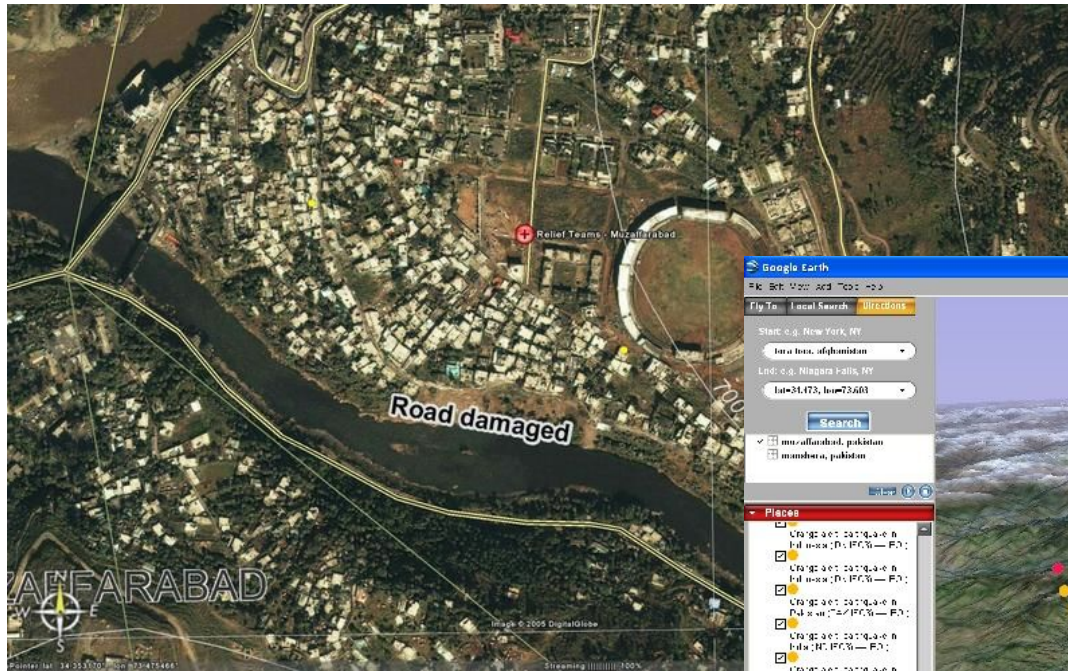
The map also shows a list of crime types and a search bar for specific crime types.

50,000 maps API sites





“I have no doubt that Google Earth helped us save lives during our 28 days over New Orleans.” - Staff Sergeant Ron Schroeder - 24th Medical Company (Air Ambulance)



Pakistan Earthquake 2005



UNITED STATES HOLOCAUST MEMORIAL MUSEUM CRISIS IN DARFUR



GIRL WITH BABY SISTER

Girl with traumatized baby sister. The baby has not made a sound since the day their parents were slaughtered and the village burned.

ushmm.org | [Learn More](#) | [See Gallery](#)

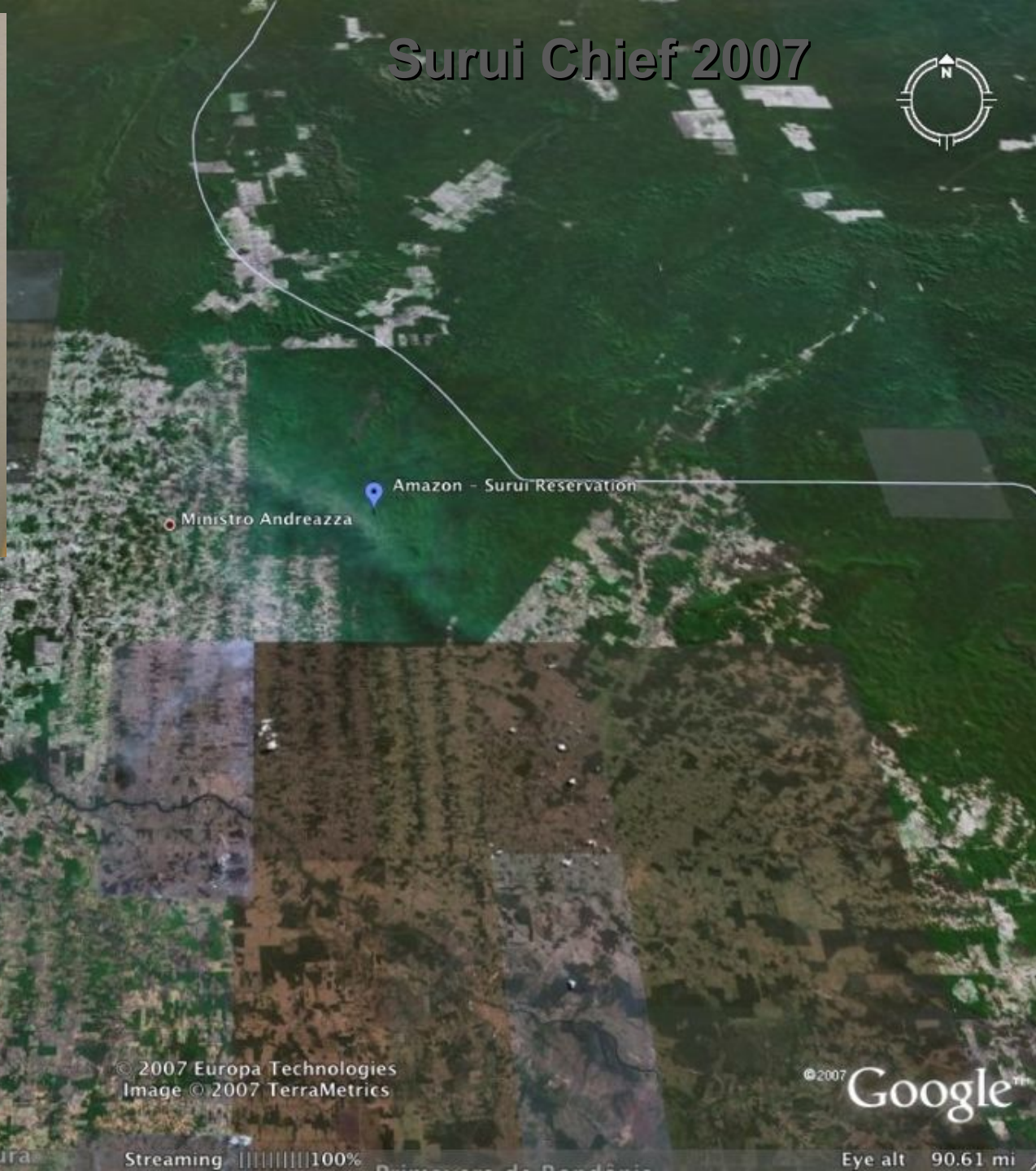
[View Images](#)

Image © 2008 TerraMetrics

Image © 2008 DigitalGlobe

2008 Google

Surui Chief 2007



Ministro Andreazza

Amazon - Surui Reservation

Castanheiras

Novo Horizonte do Oeste

© 2007 Europa Technologies
Image © 2007 TerraMetrics

© 2007 Google™

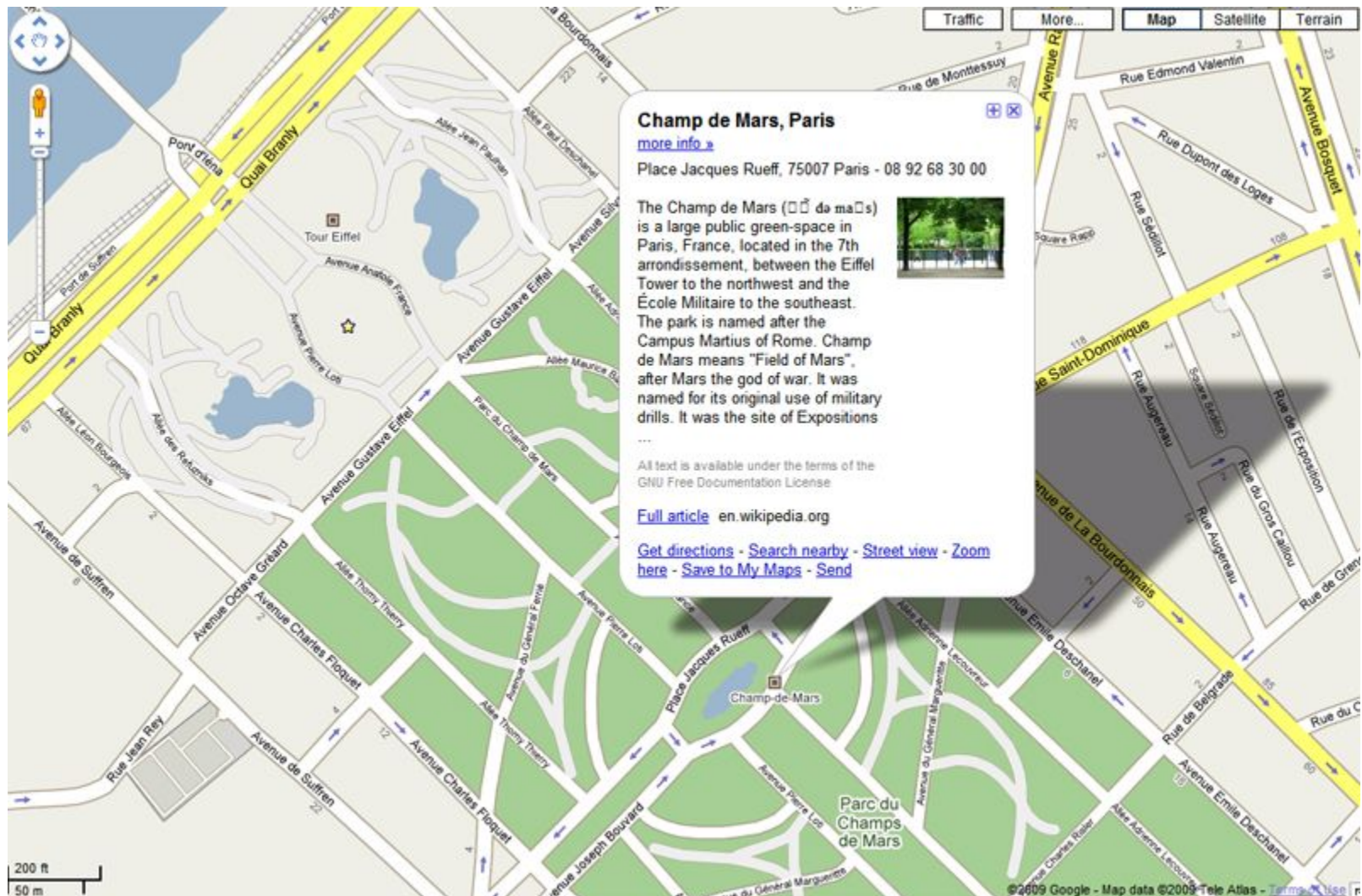
Pointer 11°09'39.12" S 61°24'58.34" W elev 877 ft

Streaming 100%

Eye alt 90.61 mi

To **geographically organize** the world's information
and make it universally **accessible** and useful.

SmartMaps



Layers





Building the GeoWeb

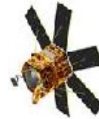
Building the GeoWeb - Data Sources



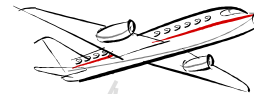
Coordinated effort to map and annotate all features, globally



Medium-resolution satellite



High-resolution satellite

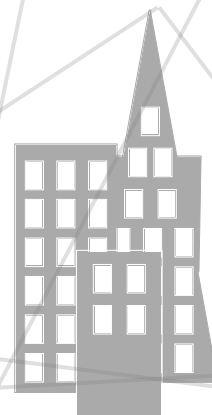


High-resolution aerial



License

- Imagery
- Address, vector data
- Traffic data
- Transit information
- YP, WP listings
- + more

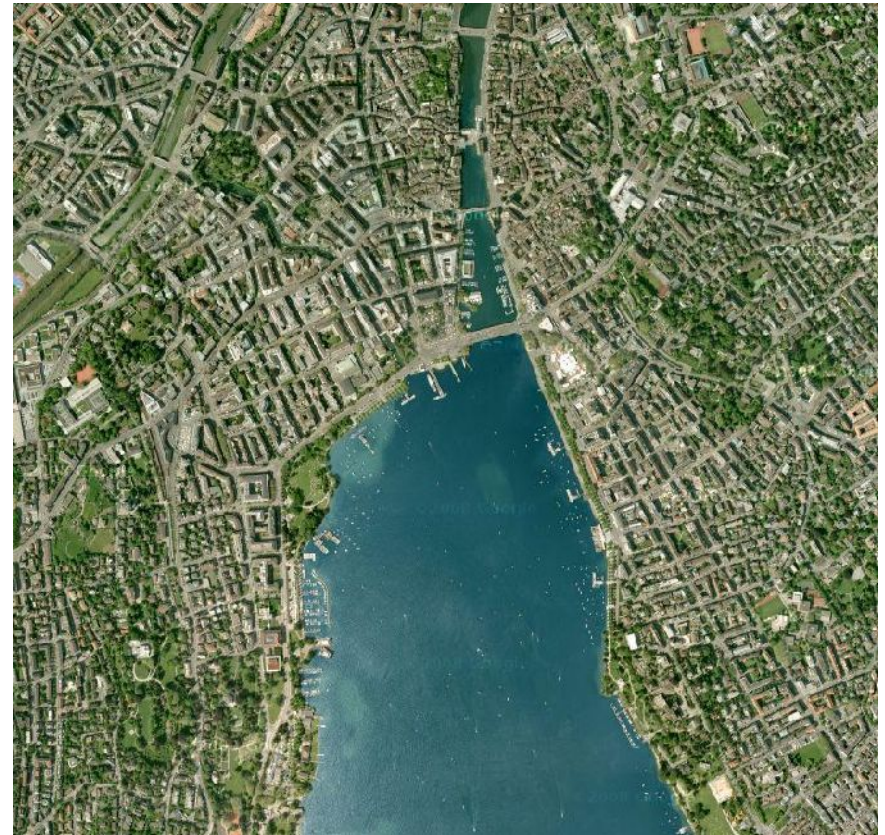
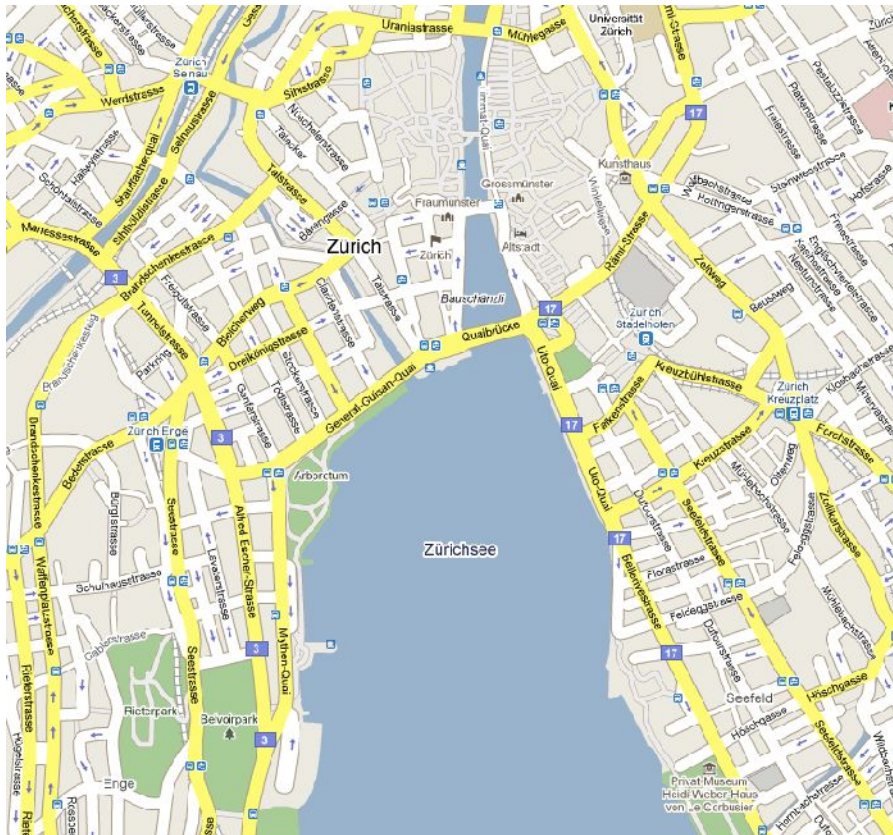


StreetView imagery

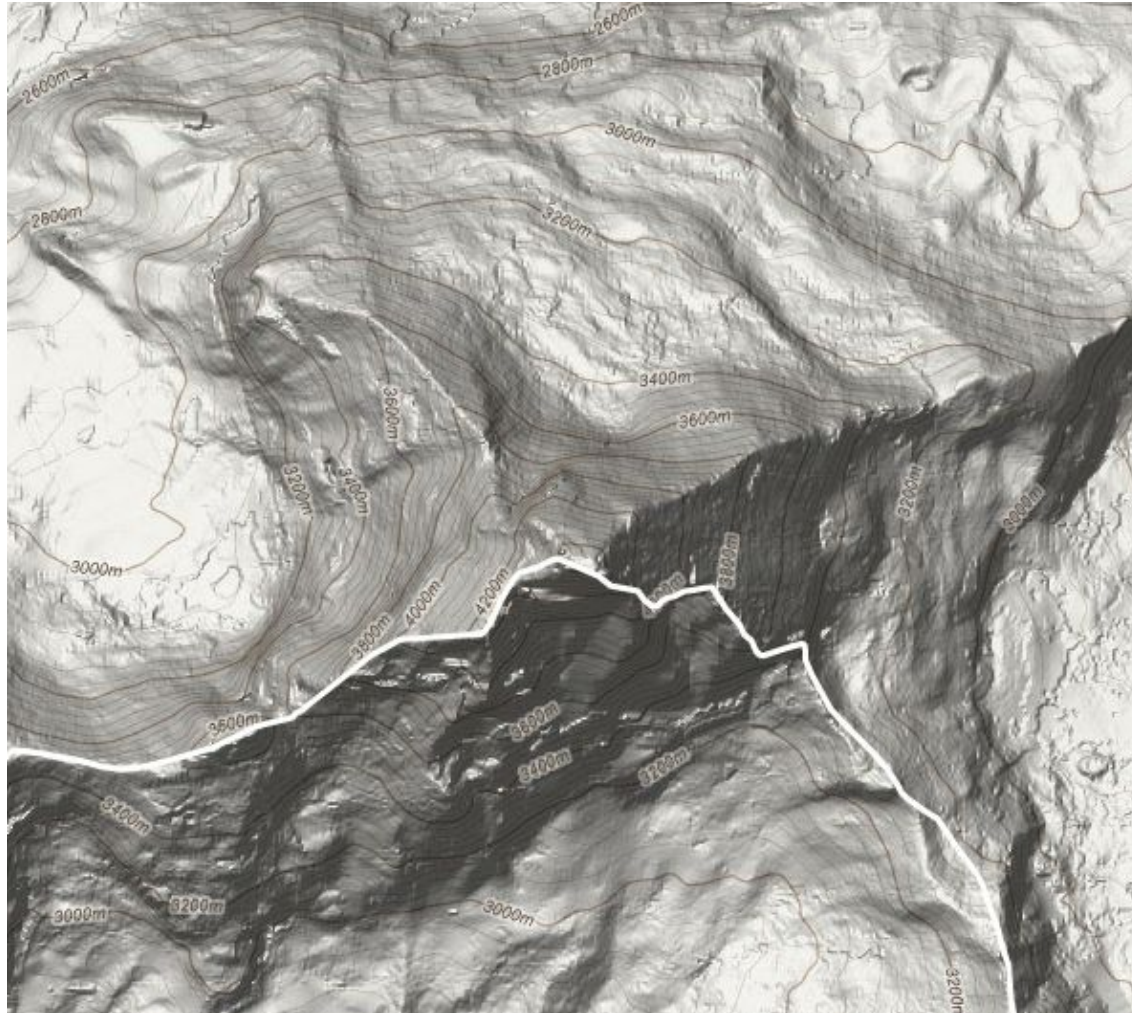
Building the GeoWeb - Partners



Building the GeoWeb - Blending Data

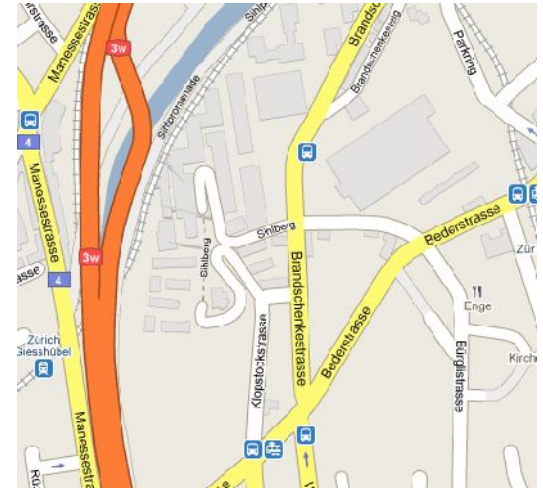


Building the GeoWeb - Elevation



Building the GeoWeb - Live Data






Building the GeoWeb - Data Sources



Coordinated effort to map and annotate all features, globally

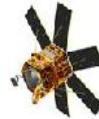


License

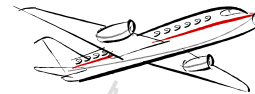
- Imagery
- Address, vector data
- Traffic data
- Transit information
- YP, WP listings
- + more



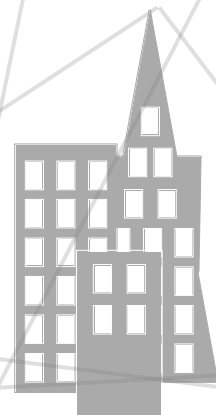
Medium-resolution satellite



High-resolution satellite



High-resolution aerial



StreetView imagery

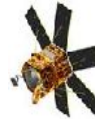
Building the GeoWeb - It's more than partners



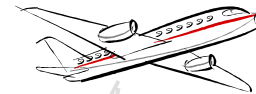
Coordinated effort to map and annotate all features, globally



Medium-resolution satellite



High-resolution satellite



High-resolution aerial



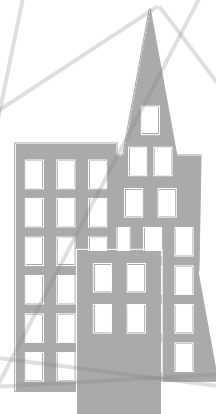
License

- Imagery
- Address, vector data
- Traffic data
- Transit information
- YP, WP listings
- + more



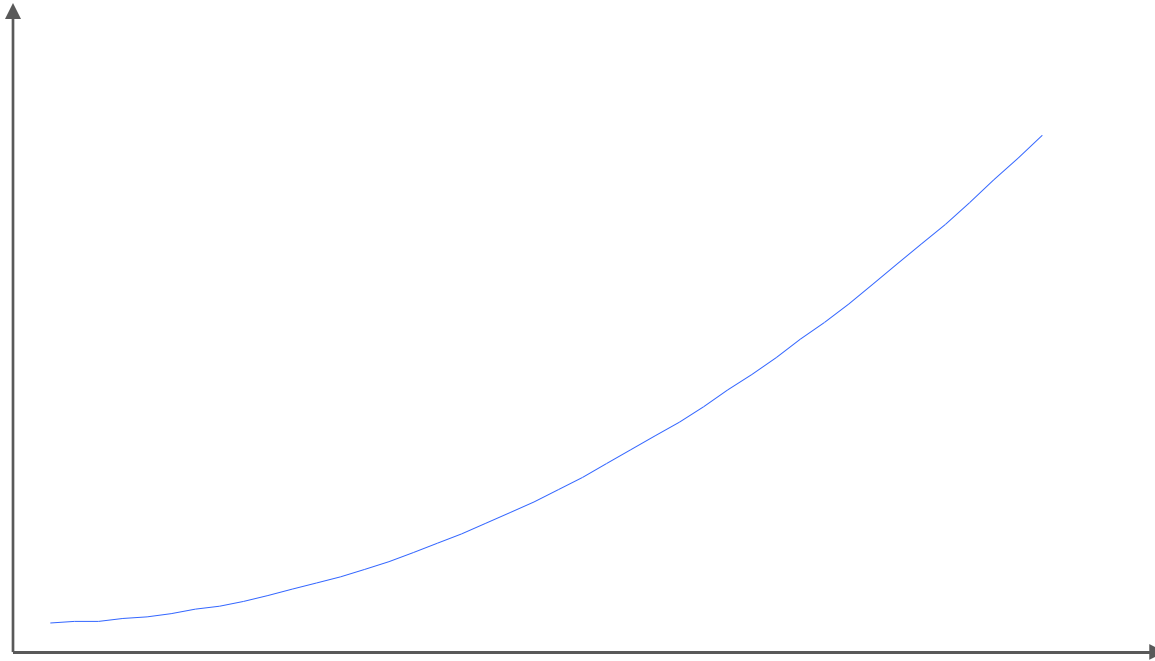
User Contributions UGC

My Maps – annotations, photos & more
Sketchup/3D Warehouse - - 3D models
Panoramio - geo photos
YouTube – geolocated videos



StreetView imagery

Internet growth: “Up and to the right”



1989

400 servers
connected to internet

1994

0.4% population
online

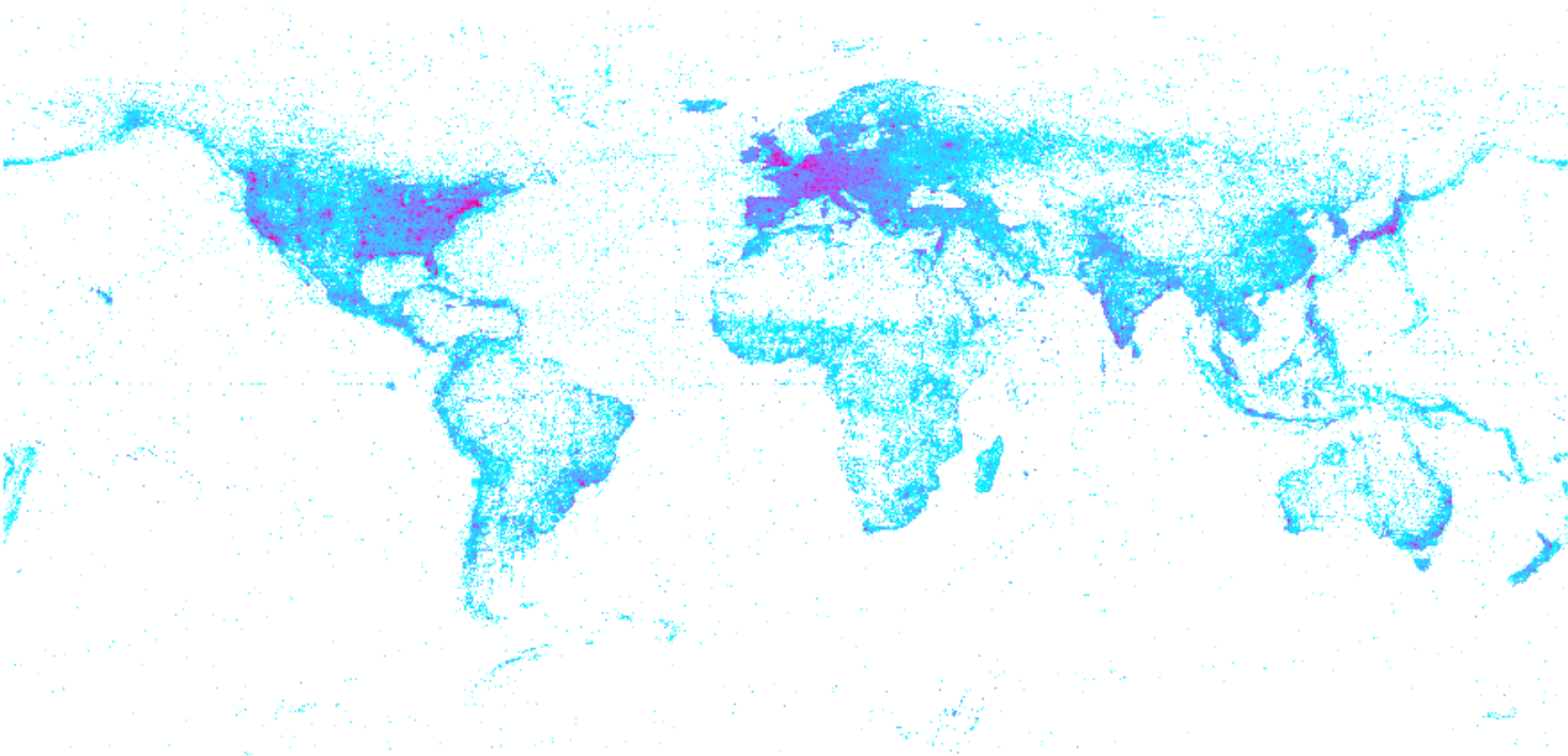
1998

150M web users

Today

480M servers
25% pop. online
1.5B web users

Evolution of the GeoWeb

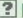




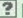
















Empowering users to build a collaborative map of the world

Google Earth Community

You are not logged in. [\[Login\]](#)

[Entrance](#) · [Main Index](#) · [Search](#) · [Active Topics](#)
[New user](#) · [Who's Online](#) · [FAQ](#)

 News	Threads	Posts	Last post
 Google Earth News (36 viewing) Headlines for the Entrance	40	72	 Exciting news for Google E... (seer) - 03/14/06 08:28 AM
 Google Earth Sightseer (23 viewing) The Google Earth Sightseer Globe newsletter and the Where in the World contest	18	29	 Keyhole GLOBE May 2005 (seer) - 07/18/05 07:42 AM
 Earth	Threads	Posts	Last post
 National Geographic Content (23 viewing) The place for placemarks and discussions about content in the National Geographic Magazine layers.	127	985	 Re: A Jeep on Desert (IanUK) - 03/16/06 02:28 AM
 Earth Browsing (172 viewing) The primary forum for sharing and discussing places around the world	61575	84520	 Kulta - Tromsdaalen Kulturh... (Kulta) - 03/16/06 11:58 AM
 Dynamic Data Layers (22 viewing) The home of user-published data layers that Google Earth users can easily install and enable: houses for sale, crime logs, today's weather, shared photographs, and many more.	454	2785	 Re: Real-Time Los Angeles ... (BreakDecks) - 03/15/06 09:05 PM
 Models and Annotations (16 viewing) Share and Discuss 3D models and geospatial annotations created with Google Earth Plus, Google Earth Pro, or KML.	424	1746	 Re: Karamel - 3D version 9... (Knuks) - 03/16/06 06:51 AM
 Current Events (18 viewing) Placemarks/Overlays regarding events of the day	1916	6342	 crash in culver city, 03/1 ... (smokeonit) - 03/16/06 11:56 AM
 Fun and Games (31 viewing) A fun place to post mystery placemarks, pose riddles, and offer hints	7565	37355	 Where are they now No4? (danescombe) - 03/16/06 11:58 AM
 Travel Information (59 viewing)	84188	83058	 Meikles Hotel



2007

2008

2009



Empowering users to build a collaborative map of the world



Search Results

My Maps New!

Save to My Maps

Map of tourist attractions of Costa Rica

See Google Maps of Costa Rica with the main tourist destinations, at www.wikicostarica.com
View only - Public
Created by Lochi Yu on Apr 5 - Updated Apr 15

[Costa Rica Google Maps](#)
For a full Google Maps of Costa Rica, see

[Tortuguero National Park](#)
The name of the park comes from "Tortuga"

[Arenal Volcano National Park](#)
Arenal Volcano is one of the most scenic

[Tortuguero National Park](#)
The name of the park comes from "Tortuga"

[Arenal Volcano National Park](#)
Arenal Volcano is one of the most scenic

KML

Print

Email

Link to this page

Map

Satellite

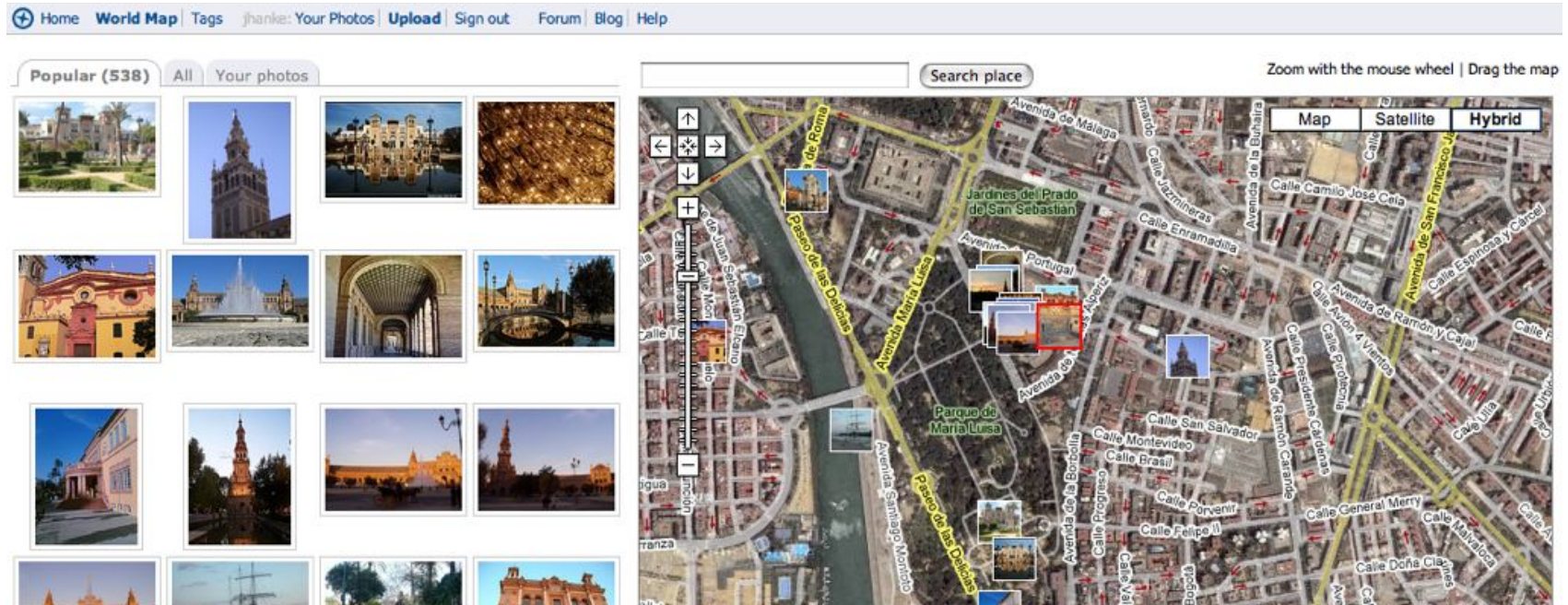
Hybrid

2007

2008

2009

Empowering users to build a collaborative map of the world



Panoramio

2007

2008

2009



Empowering users to build a collaborative map of the world



Empowering users to build a collaborative map of the world



Google Local Business Center

Enter your business information below. Your listing will appear to the right. This is just a first step. After this has been completed, you will be able to upload photos and videos, specify categories, payment options and business hours and much more.

Country:

Switzerland

Company/Organization:

Acme AG

Street Address:

Bahnhofplatz 4

Postal Code: [?](#)

CH- 8134

City/Town:

Adliswil

Main phone:

043 993 87 32

Example: 043 123 45 67

[Add more phone numbers](#)

Email address:

owner@acme.ch

Example: myname@example.com

Website:

www.acme.ch

Example: http://www.example.com

Description:

200 characters max, 200 characters left.

Category:

Luggage Repair Service

Which categories (up to 5) best describe your business?

Ex: Dentist, Wedding Photographer, Thai Restaurant

Category:

[Add another category](#)

Acme AG

owner@acme.ch

Bahnhofplatz 4

CH-8134 Adliswil

Schweiz

043 993 87 32

[www.acme.ch](#)

©2009 Google - Map data ©2009 Tele Atlas - [Terms of Use](#)

[Fix incorrect marker location](#)



2007

2008

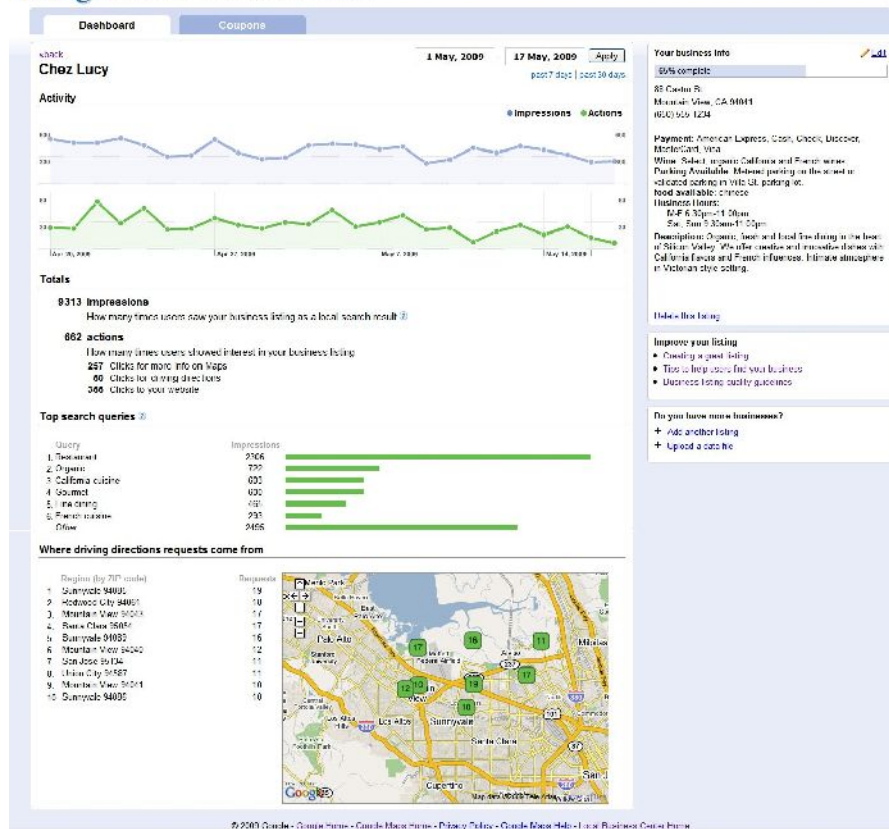
2009



Empowering users to build a collaborative map of the world



Google Local Business Center



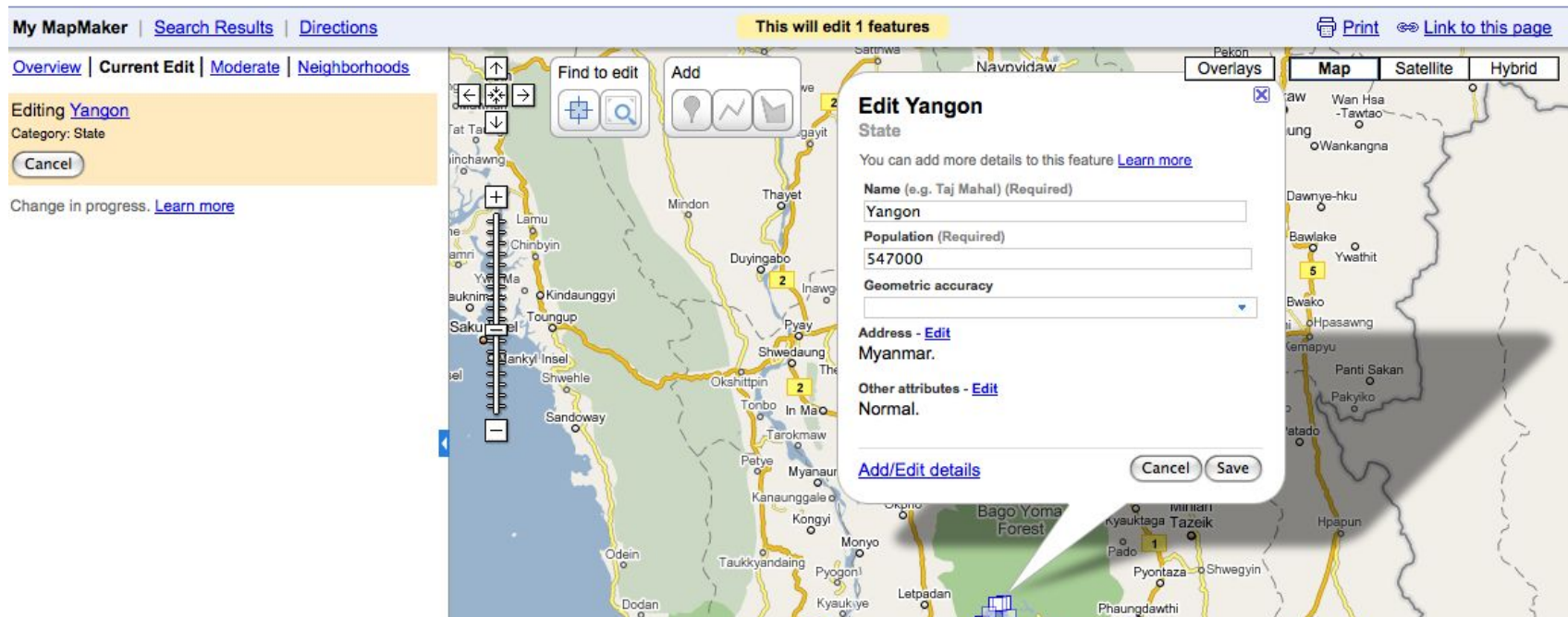
2007

2008

2009



Empowering users to build a collaborative map of the world



Panoramio

Google
Map Maker

2007

2008

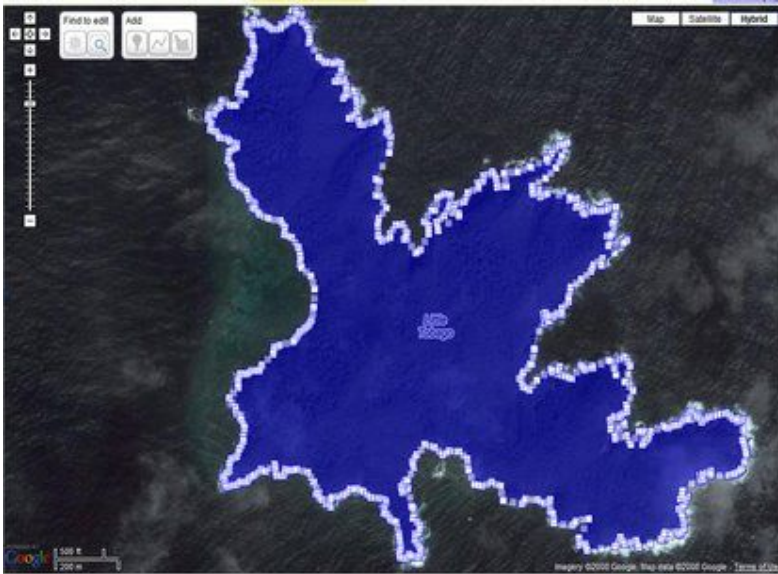
2009



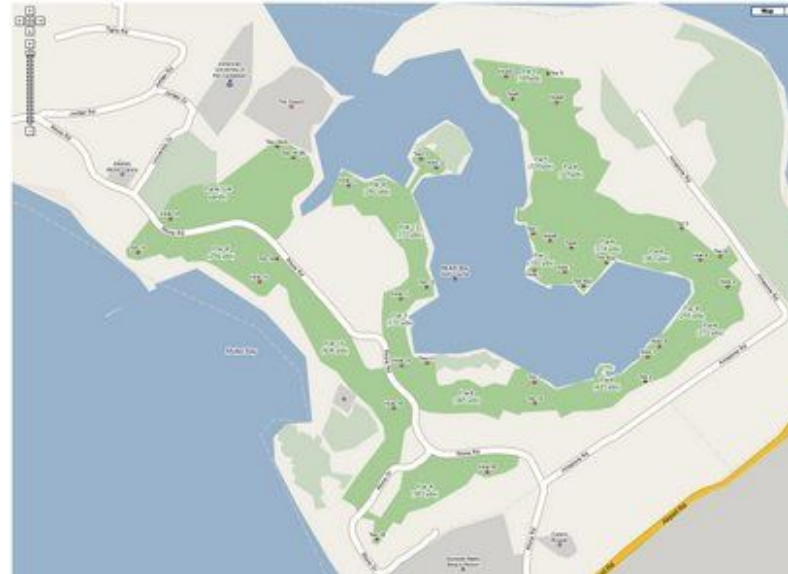
Mapping the world, one Map Maker at a time



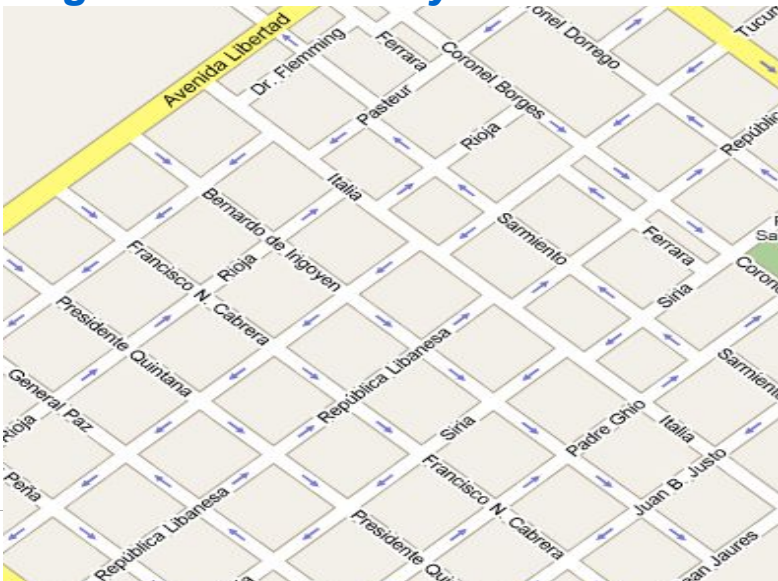
Little Tobago



Caribbean golf course



Argentina – one way streets

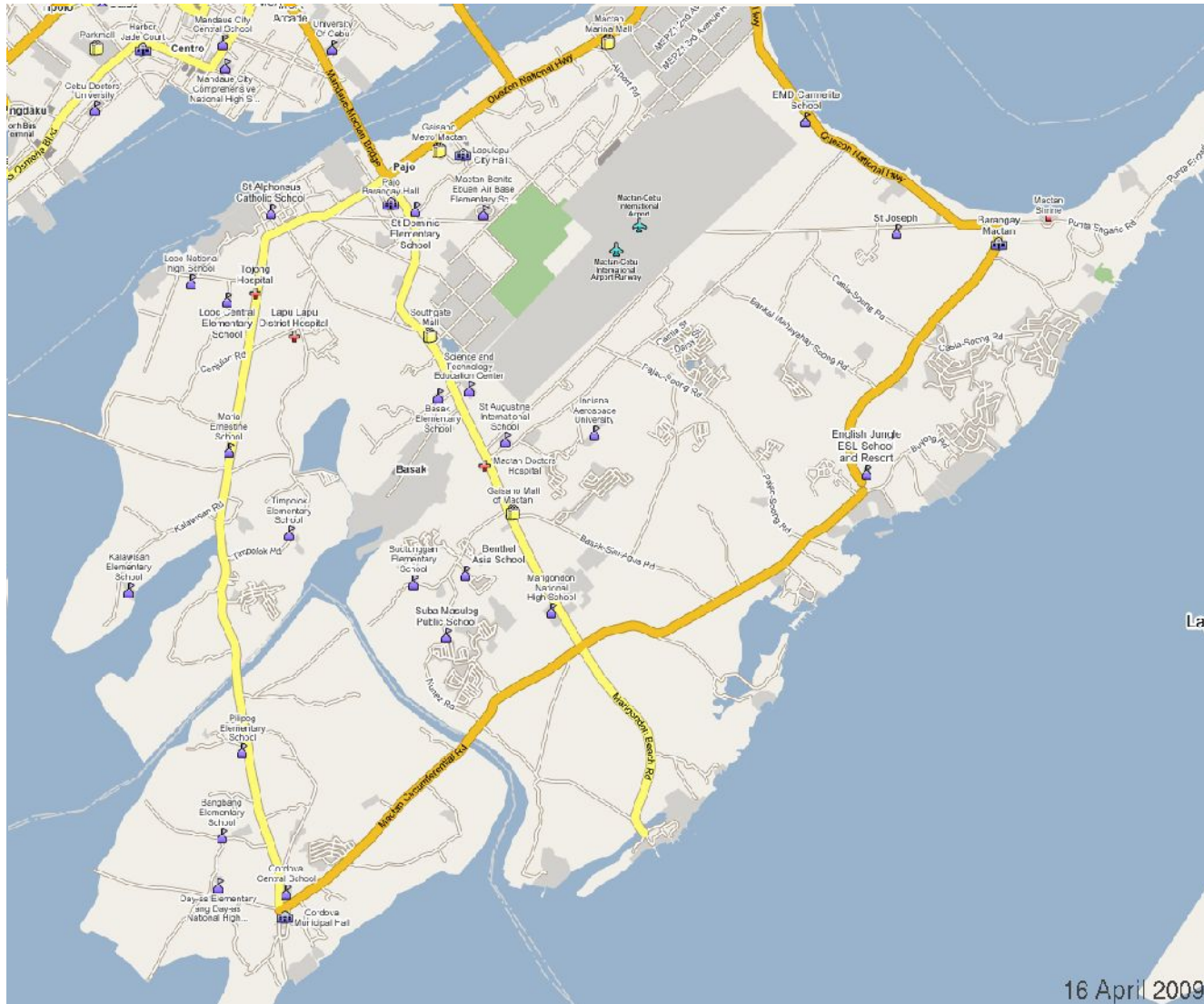


Ivory Coast – mapping through the clouds



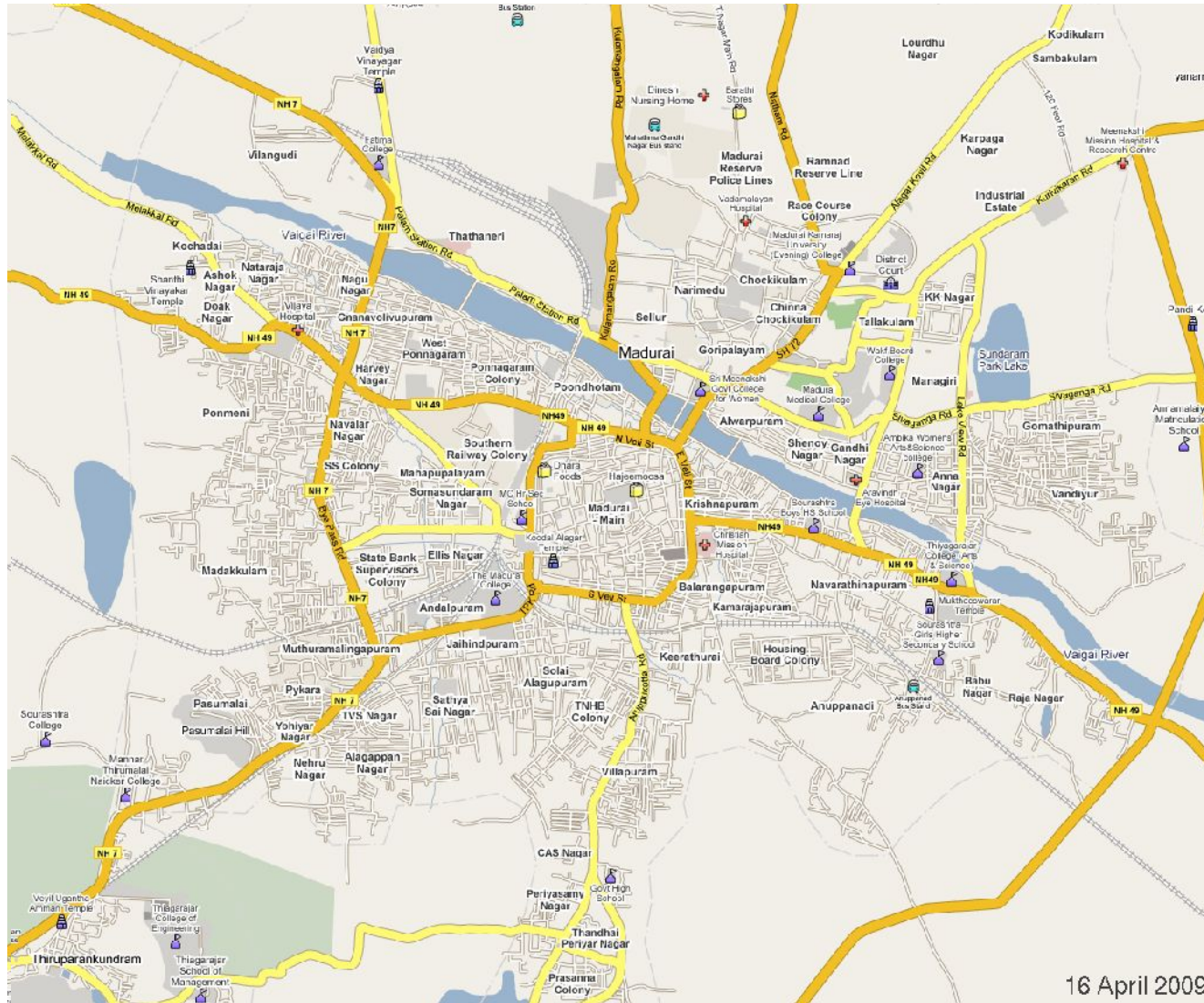
A global, collaborative canvas

Lapu City, Philippines

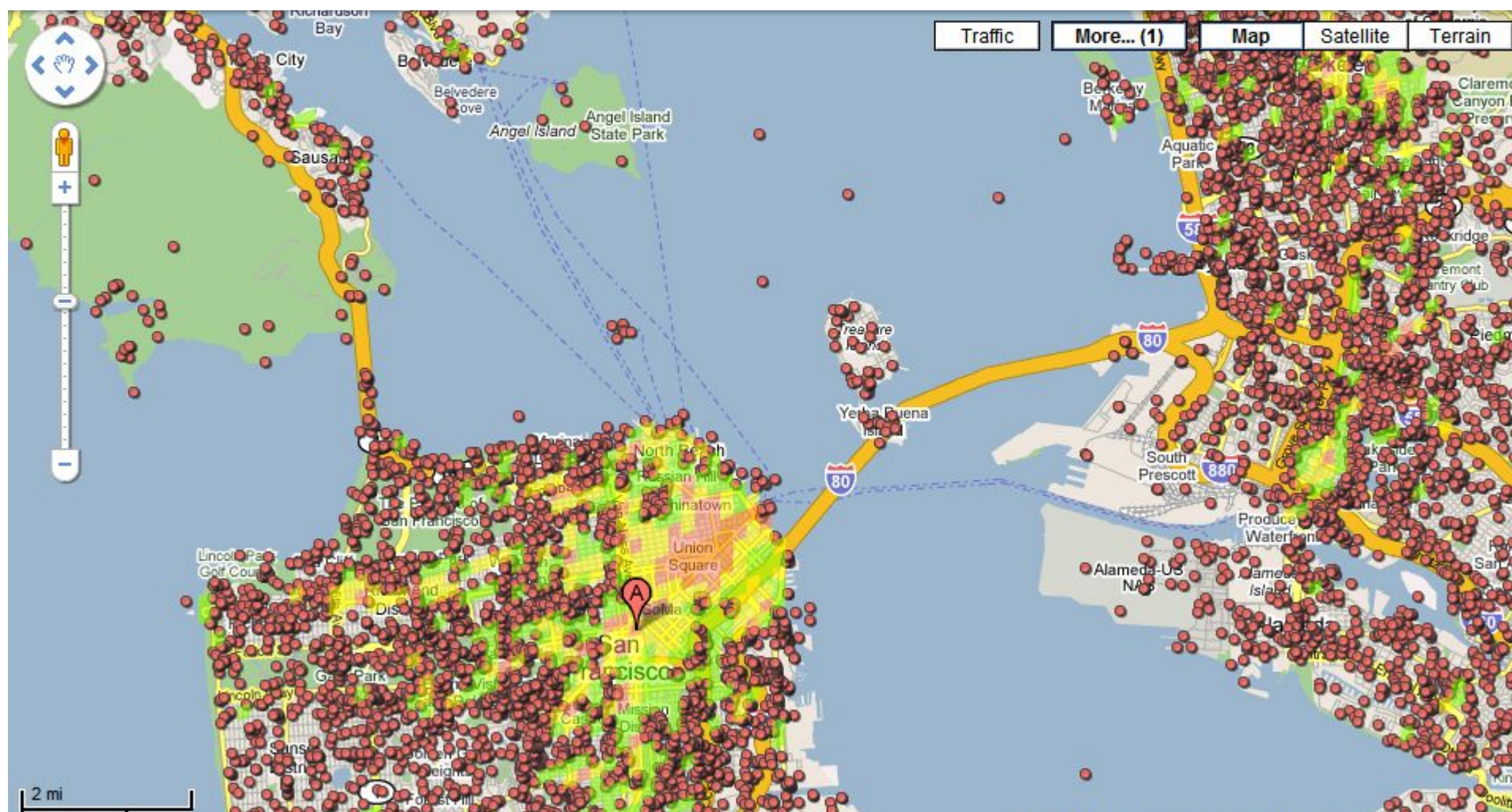


16 April 2009

Madurai, India



San Francisco, CA





**Helping users
find information**

- We put a lot of thought into how Maps work for users
- Our goal: make it easy to discover useful and relevant information quickly
- Demos of More button - useful for travel and exploration
 - Panoramio layer
 - Wikipedia layer
 - Youtube layer
- Street View - the next generation of Maps
 - Panoramio integration and "smart navigation"

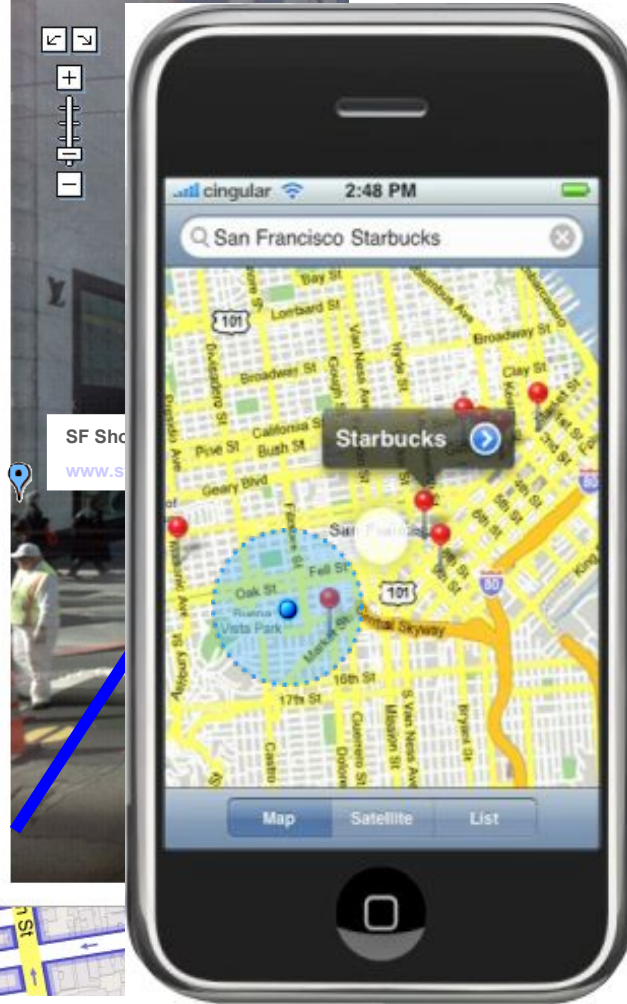
- Using mobile - find places on the run
 - Search for a restaurant
 - Transit and other directions
 - Click-to-call
- Maps API and our approach to open innovation
 - API is a considerable fraction of the Maps traffic

- Place pages
 - re-defining what a "place" is
 - comprehensive information about all types of locations
 - many things have a geographic context
 - Wide range of information about a place is out there
 - people want to know more than address / phone
 - photos, reviews, related maps, how to get there
 - presenting the info in a simple, organized way
 - Powerful tool for local businesses
-

Union Square, San Francisco

Geary St / Stockton St

Cheese Cake Factory



Dewey Monument

This winged female victory symbol was modeled after sugar heiress Anne Slocum. It was dedicated by Theodore Roosevelt in 1903 to Admiral George Dewey's Philippine victory during the Spanish American War.

[Edit](#) - [Delete](#)
Get directions: [to here](#) - [from here](#)
[Search nearby](#)

Top 10 Romantic Places in SF

www.Platial.com

Original Palm Tree from 1903

Original Levi Store

[View on map](#) - [View on map](#)
3001 Market St
San Francisco, CA 94109
(415) 441-4100 - [phone](#)
[View on map](#) - [View on map](#)
[View on map](#) - [View on map](#)

Parking Garage

Opening hours: 6am-10pm



Union Square, San Francisco, California

From Wikipedia, the free encyclopedia

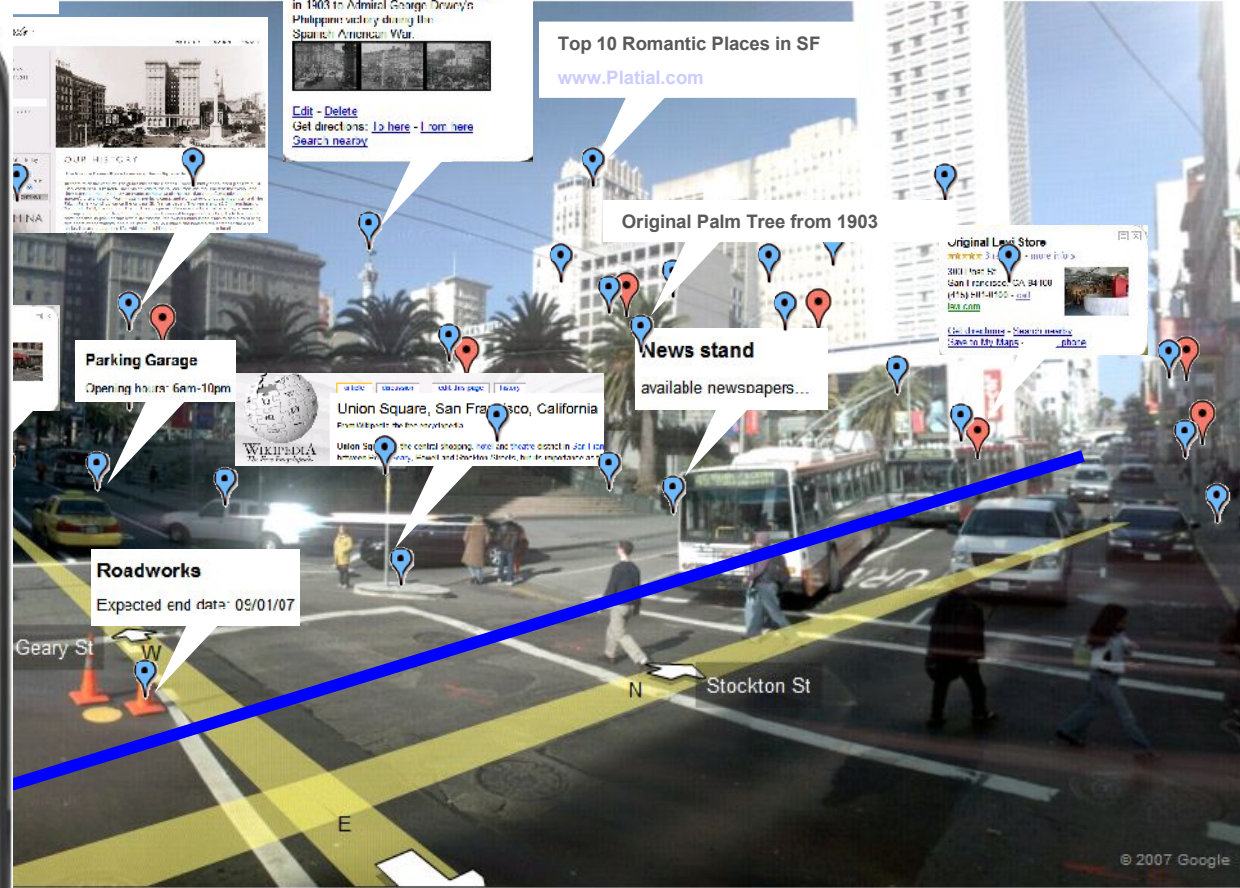
Union Square is the central shopping, transit and theatre district in San Francisco, California. It is bounded by Geary, Powell and Stockton Streets, and the intersection of

News stand

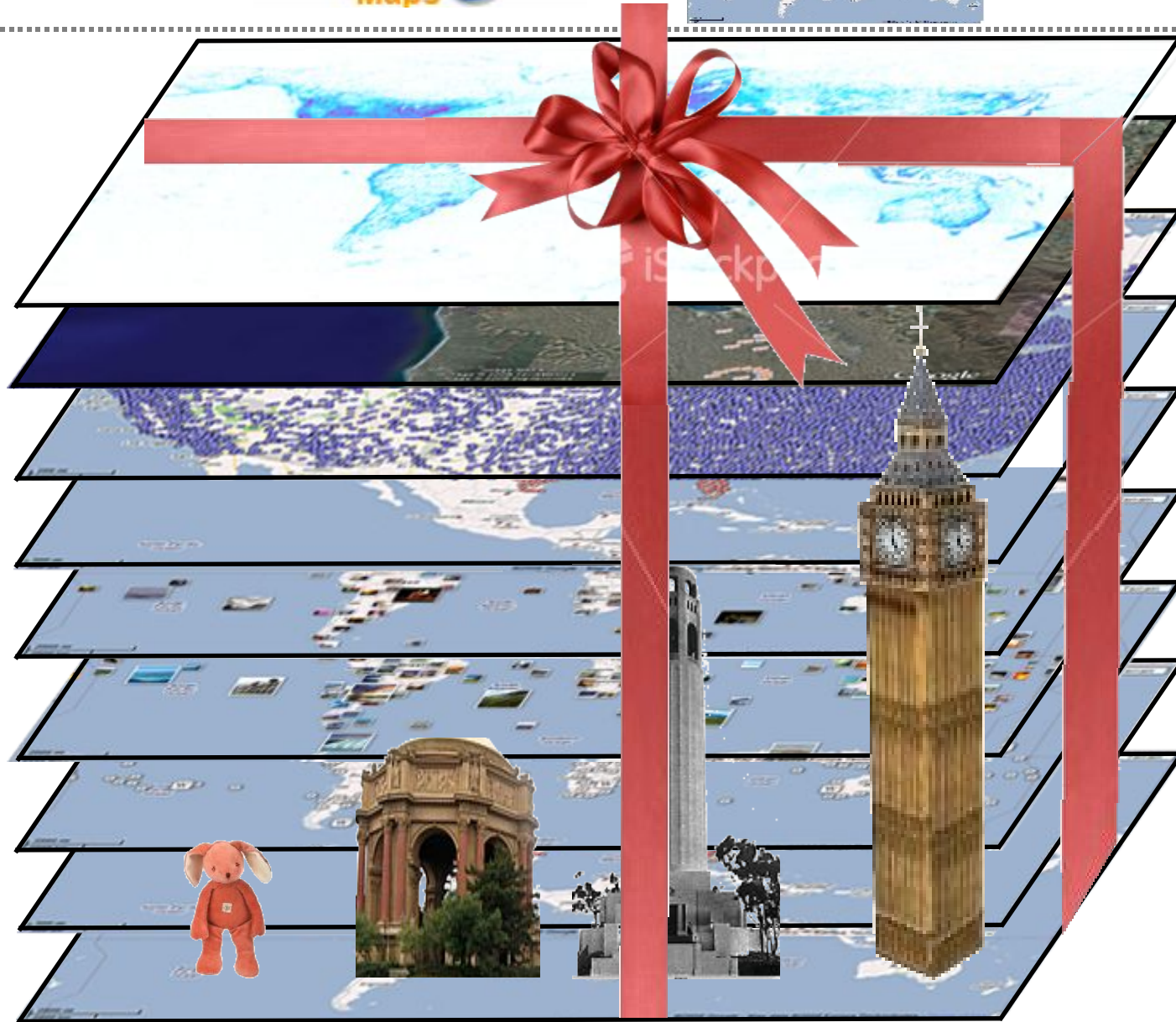
available newspapers...

Roadworks

Expected end date: 05/01/07



Google™ is



[News](#)

[Web](#)

[Video](#)

[Images](#)

Thank You

Questions?

